



CX18-S2
Exploded view

CORE[®]

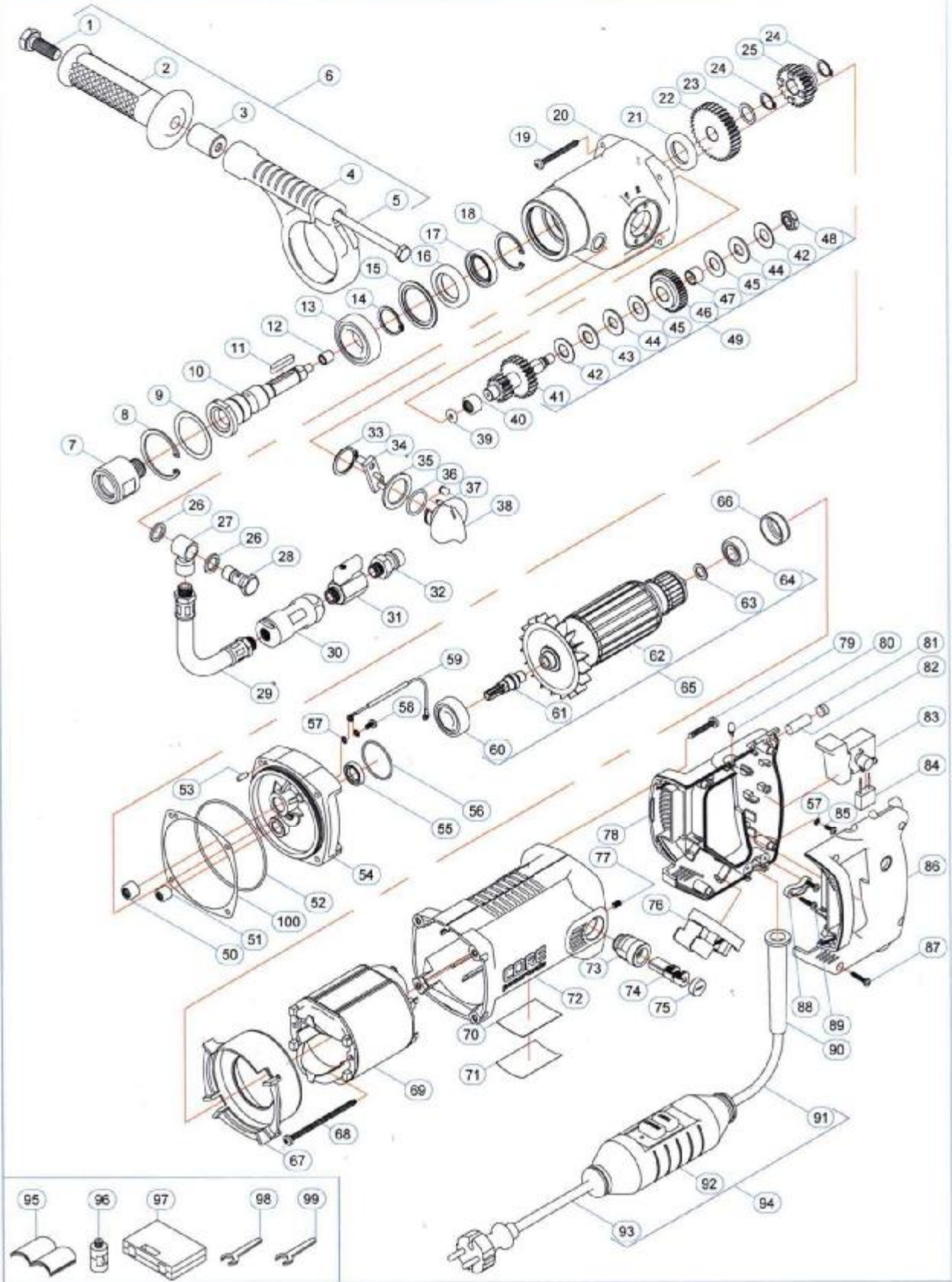
DESCRIPTION
MOTOR CX18 S2

TYPE
CX18 S2

powertools

PUBLISHED 30-10-2007 REVISION
DRAWN E. den Blijker

DOCUMENT No N18C00S2
PAGE 1/3



POS NR.	QTY (PCS)	ARTICLE NR.	ARTICLE DESCRIPTION
1	1	FB2030	Hex-Head Bolt
2	1	N14027	Grip
3	1	N14026	Clamp-axe
4	1	N18032	Clamp Ring 60
5	1	FC0820	Hex-Head Bolt
6	1	N18038	Grip Assembly
7	1	N18063	Drill Connection G1/2"-M18
8	1	FR147	Spring Retaining Ring
9	1	FS37P3	Shim-ring
10	1	N18064	Main Shaft (M18x2,5)
11	1	F6R228	Parallel Key
12	1	EB009L	Sleeve
13	1	EA050A	Bearing
14	1	FR025	Spring Retaining Ring
15	1	N18065	Spacer
16	1	E30A251	Shaft Seal Ring
17	1	E30A221	Shaft Seal Ring
18	1	FR135	Spring Retaining Ring
19	4	FF1450	Pan Head Tapping Screw
20	1	N18057	Gearbox 2 Speed
21	1	E3203	Shaft Seal Ring
22	1	N18003	Gear
23	1	FS14P2	Shim-Washer
24	2	FR014	Spring Retaining Ring
25	1	N18005	Gear
26	2	F45240	Swivel Seal Ring
27	1	F45241	Swivel
28	1	F45242	Swivel shaft
29	1	N14081	Waterhose
30	1	N14082CP	Flow Indicator Blue
31	1	F43340	Valve
32	1	F2015	Bushing
33	1	FR024	Spring Retaining Ring
34	1	N18007	Switch Handle
35	1	FS25P2	Shim-ring
36	1	E4021B	O-Ring
37	2	F42605	Spring Plunger
38	1	N18006	Switch Knob
39	1	EN0105	Needle Bearing
40	1	EB015A	Needle Roller Bearing Drawn Cup
41	1	N18004	Gearshaft
42	2	FR525	Disc Spring
43	1	FR550	Disc Spring
44	2	N14007	Lock washer
45	2	N14006	Clutch washer
46	1	N14005	Clutch gear
47	1	ES012A	Sliding Bushing
48	1	FM10S1	Locking nut
49	1	N18035	Gear Assembly
50	1	EB012A	Needle Roller Bearing Drawn Cup

POS NR.	QTY (PCS)	ARTICLE NR.	ARTICLE DESCRIPTION
51	1	EB008A	Needle Roller Bearing Drawn Cup
52	1	E4084A	O-Ring
53	1	F6Q112	Parallel Pin
54	1	N18058	Gearbox Cover 2 Speed
55	1	E30A05	Shaft Seal Ring
56	1	E4035A	O-Ring
57	3	FV04TV	Toothed Lock Washer
58	1	FZ4110	Pan Head Screw
59	1	N18055	Earth Cable (Back Grip)
60	1	EA028F	Bearing
61	1	N14012	Pinion
62	1	N18014	Armature 1800 Watt
63	1	FS10P2	Shim Ring
64	1	EA007D	Ball Bearing
65	1	N18034	Armature Assembly 1800
66	1	N14011	Bearing Cup
67	1	N14010	Aircover
68	2	FF1485	Pan Head Tapping Screw
69	1	N18013	Stator 1800 Watt
70	1	N18200	Serial Plate
71	1	N140281	Serial Protection
72	1	N18056	Motor Housing 1800
73	2	N14020	Brushholder 12,5x6,4
74	2	N14058	Brush
75	2	N14022	Brushholder-Cap
76	1	N18010	Motor Control 8 Amp
77	2	FIK0510	Hexagon Socket Set Screw
78	1	N14015	Grip (right-cover)
79	4	FF1432	Pan Head Tapping Screw
80	1	N14032	LED (red)
81	1	N14035	Air Level
82	1	N14034	Tube Air Level
83	1	N14030	Switch
84	1	N14033	Capicitor
85	1	FQ2408	Pan Head Tapping Screw
86	1	N14016	Grip (Left Part)
87	4	N14040	Tapping Screw
88	1	N14024	Cable Clamp
89	2	N14039	Tapping Screw
90	1	N14023	Cablehose
91	1	N18051	Electrocable
92	1	9Q2024CP	Personal Safety Switch
93	1	N18050	Electrocable
94	1	N18037CP	Electrocable Assembly (Blue)
95	1	NMH18S2	Manual CX18 S2
96	1	N18039	Oil
97	1	N20060CP	Carrycase
98	1	G1000	Wrench 22mm
99	1	G1021	Wrench 32mm
100	1	N14096	Oil Seal